



Mücke, 24.08.2021

Complaint processing: **Exchange part TopTrike carousel 64360**

Dear ladies and gentlemen, dear kindergarten-team!

There has been a processing error at the factory with our TopTrike carousel. The centre axle is not optimally processed and could have quality defects. This is not a safety-relevant defect, but we would like to guarantee you the best possible quality, which is why you received your replacement part today.

All TopTrike products delivered in future will conform to our quality standard!

If you have any questions, please do not hesitate to contact us!

Many thanks in advance!

With kind regards
Your beleduc Team

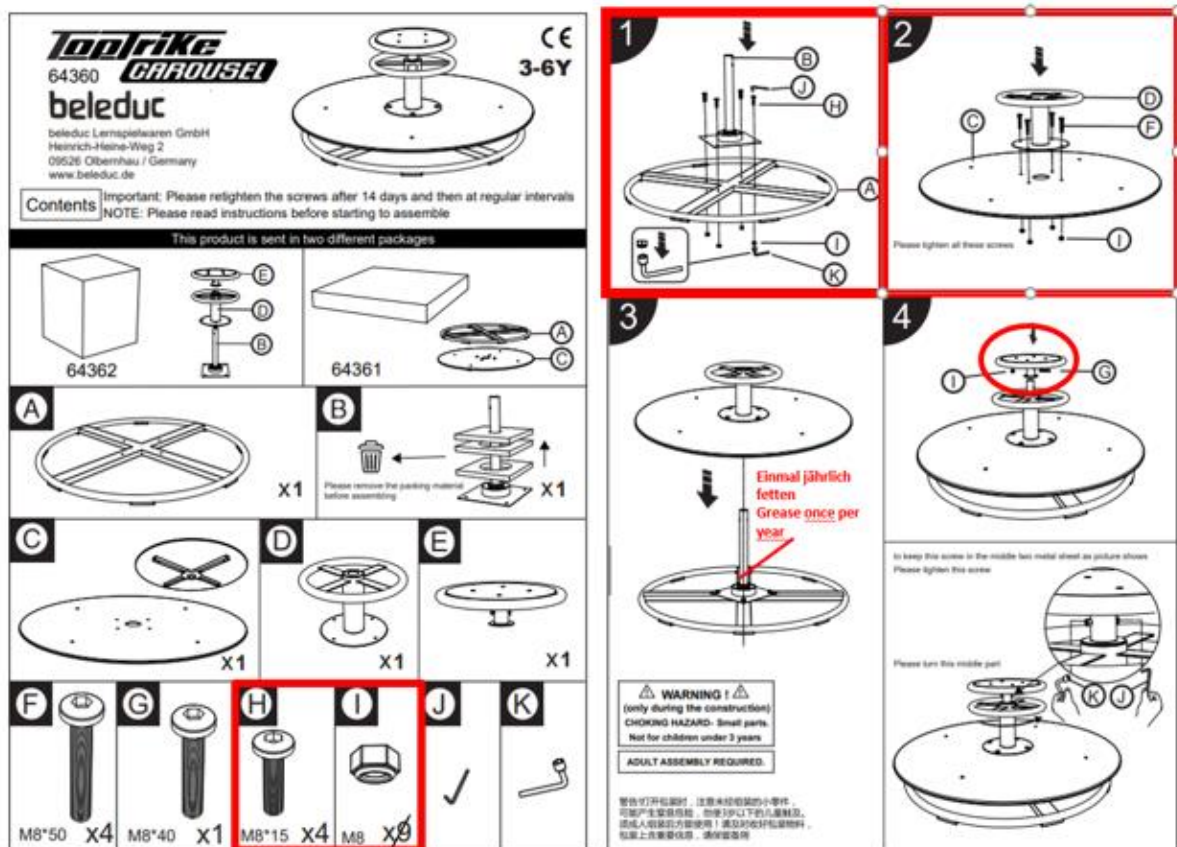
The replacement should be carried out as follows (see red marked)):

- Unscrew the screws G+ I (picture 4)
- Remove the part E (picture 4)
- Now you can remove the complete part as shown in picture 3 (C with D).
- Now loosen the screws H and I (picture 1)
- Now the replacement part can be inserted

Finally you can reassemble the carousel in reverse order.

Once a year we recommend to **grease the area marked in figure 3 (approx. 1cm out of the tube)** to keep the optimal quality. For this purpose, you have also received a tube of long-term grease.

Thank you for your efforts and have fun with our carousel!



We kindly ask you to dispose the old centre axle B. A return shipment is not necessary.